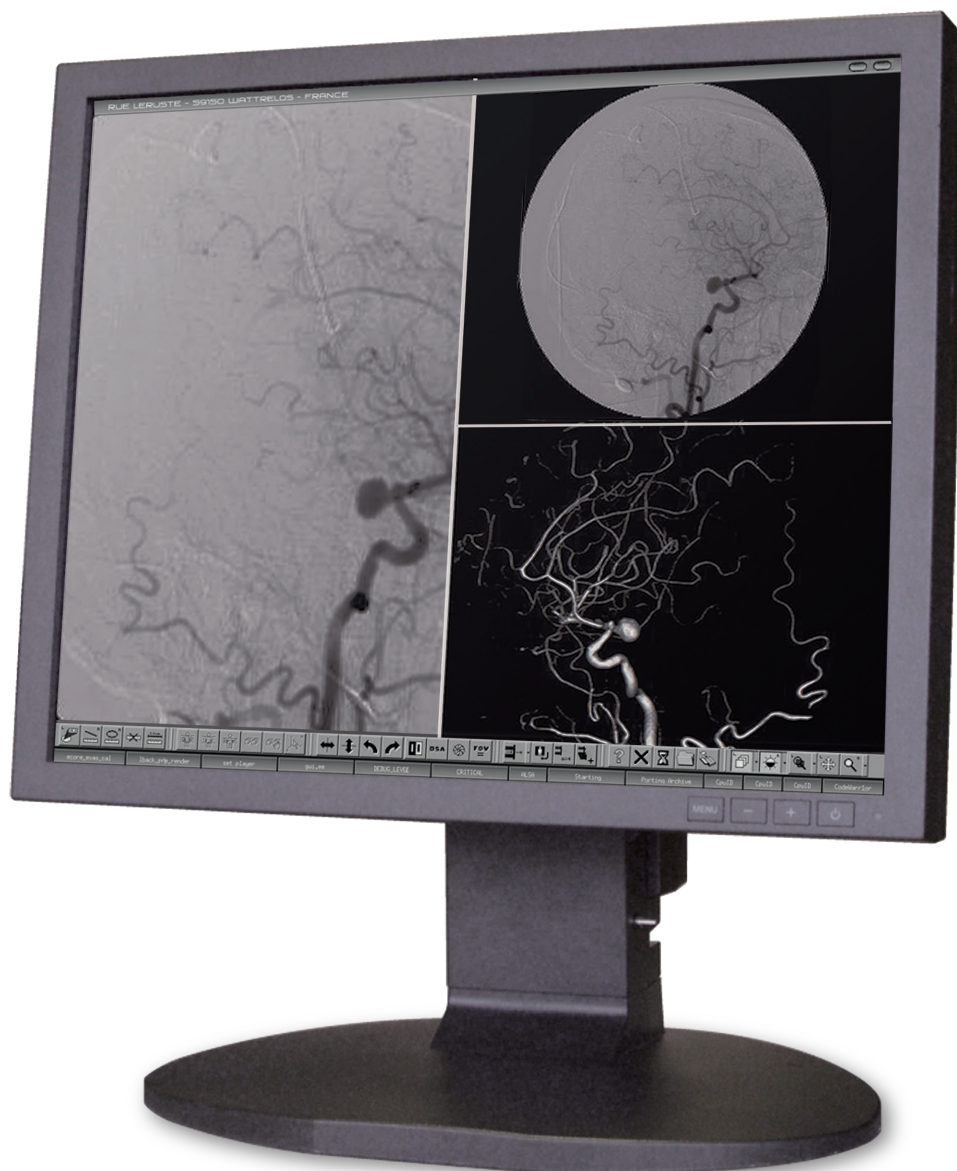


# JVC

*Proven Solution for Multi-Modality Viewing*



19" Screen	Grayscale
High Bright	LED
BNC IN-OUT	DVI-D
1400 cd/m <sup>2</sup>	1000:1 Contrast
12 Bit LUT	3 <sub>yr</sub> Warranty

**ME195**  
19", 1.3MP Monochrome Display

# Multi-Modality Medical Monitor

# JVC

## ME195

<b>LCD Panel</b>	Technology	19.0-inch , monochrome, TFT, IPS technology
	Display Area	376 mm x 301 mm
	Pixel Pitch	0.294 mm x 0.294 mm
	Contrast Ratio	1000:1 (typ)
	Maximum Luminance	1400 cd/m <sup>2</sup> (typ) 450 cd/m <sup>2</sup> (Calibrated)
	Viewing Angle	170° horizontal and vertical (typ)
<b>Resolution</b>		1280 x 1024 (SXGA)
<b>Interface</b>	Input Signal	VGA D-sub mini 15pin, DVI-D 24pin, BNC x 3, H-sync V-sync
	Output Signal	BNC Analog Video
	Plug and Play	DDC2B compliant
<b>Input Power Supply</b>	Input	100V - 240V, 50/60Hz
	Power Consumption	49W (Maximum)
<b>Features</b>	OSD	Auto adjustment, Brightness, Contrast, etc
	Gamma presets	1.6, 1.8, 2.0, 2.2, 2.4 and DICOM GSDF
<b>Safety Standards</b>		ANSI/AAMI ES60601-1(2005), CAN/CSA C22.2 NO. 60601-1(2008), CE (EN60601-1, EN60601-1-2), FCC class B, VCCI class B, ICES-3-B, CCC, RCM, J-Moss, RoHS
<b>Physical Characteristics</b>	Dimensions	Landscape: 416 mm x 520 mm x 220 mm
	(W x H x D)	Portrait: 342 mm x 558 mm x 220 mm
	Weight	9.3 kg
	Tilt Stand	Tilt, Swivel, Portrait / Landscape
	Mount	VEESA standard (100 mm x 100 mm)
	Security Slot	Anti-theft security slots (display and tilt stand)
<b>Accessories</b>		Power cord, VGA cable, DVI cable, User manual

The JVC ME195 is a 1.3 MegaPixel, 19", grayscale display, ideal for multiple modalities such as CT/MR and ultrasound. The ME195 comprises high brightness, high contrast ratios and is DICOM auto-calibrated. This display also has an LED backlight system, providing more image stability and energy savings.

### 12-bit LUT (Look-up Table)

The built-in LUT selects the most appropriate 256 shades of grayscale from a palette of 4096 grayscale steps to display finer and smoother grayscale gradation.

### Luminance Stabilizing System

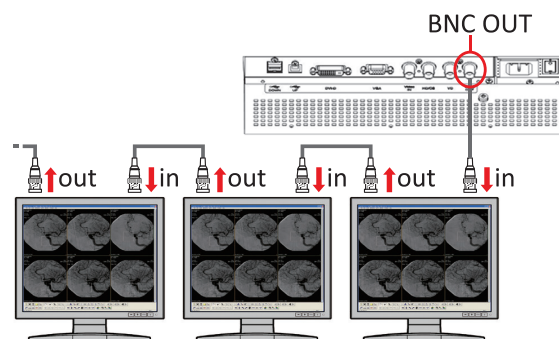
The Luminance sensor in back constantly monitors and accurately stabilizes luminance on the screen to optimize image quality.

### Built-in Power Supply

Internal power supply saves your work space by eliminating the need for an AC adapter.

### Digital / Analog BNC / VGA Interface

You can daisy chain multiple ME195 via BNC input/output connectors. BNC buffer amplifier ensures same image quality for each ME195 in a daisy chain.



[www.questinc.com](http://www.questinc.com)

### Corporate Headquarters

Quest International, Inc.  
60 Parker, Irvine, CA 92618  
+1.800.231.6777 Toll Free  
[info@questinc.com](mailto:info@questinc.com)

Distributed by

