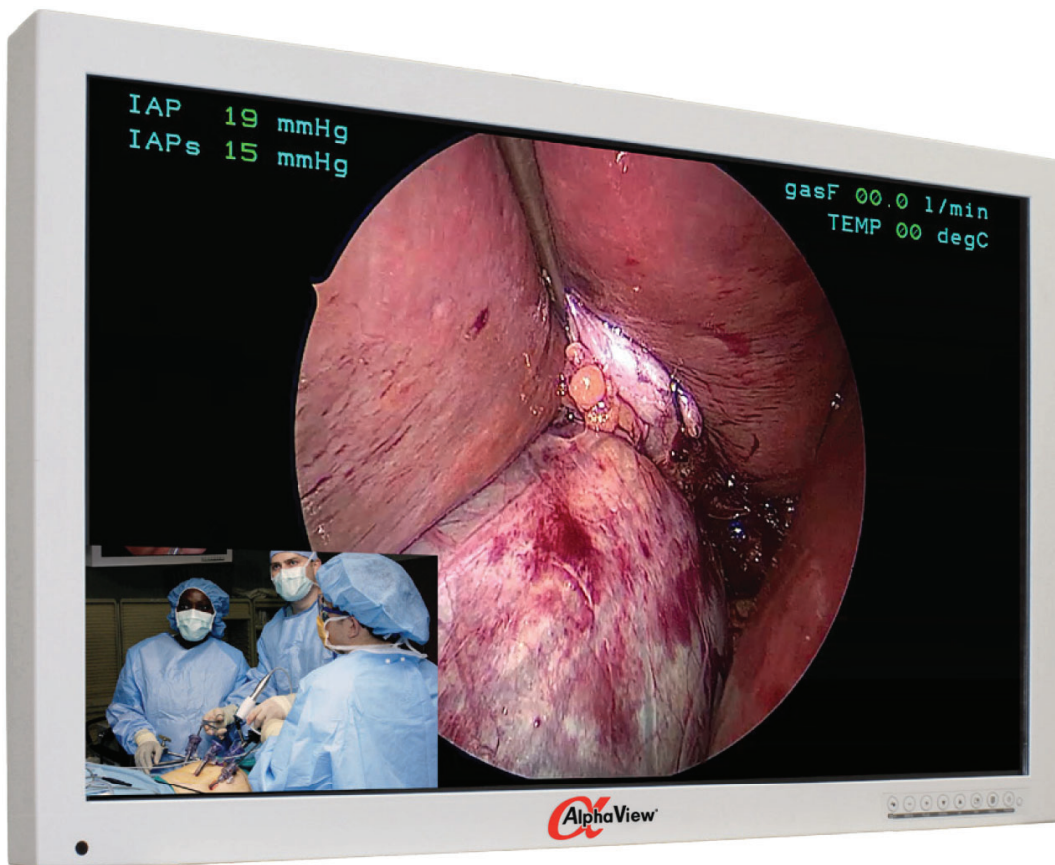




*a new way to view...*



- 32" Screen
- HD 1920 x 1080
- Color
- Surgical
- Dual In/Out
- LED
- 1300:1 Contrast
- 450 cd/m<sup>2</sup>
- OSD
- Wide Angle
- Certified
- 1 yr Warranty

## **AVC2F8P**

**32" HD LCD MONITOR**  
for Surgical & Endoscopic Applications

# Medical Surgical LCD Monitor



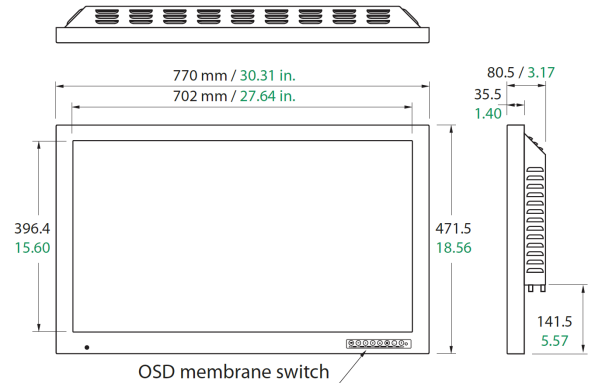
## AVC2F8P

Type	32 inch TFT LCD (LED)
Resolution	1920 x 1080 (16:9)
Active Area	698.4(H)mm x 392.9(V)mm
Contrast Ratio	1300:1
Surface Treatment	Anti-glare
Average Brightness	450 cd/m <sup>2</sup>
Pixel Pitch (mm)	0.36375 x 0.36375
Response Time (typical)	25 ms (gray to gray)
Number of Colors	16.7 Million
Viewing Angle (CR>10)	89°/89°/89°/89° or 178° H&V
Input Signal	2 x DVI-D 2 x SD/HD/3G-SDI (BNC) 2 x SOG 1 x VGA (D-sub) 1 x C-Video (BNC) 1 x S-Video (DIN) 1 x Component (R, G, B, Y, Pb, Pr) (5 x BNC)
Output Signal	2 x DVI-D 2 x SD/HD/3G-SDI (BNC) 2 x SOG 1 x C-Video (BNC) 1 x S-Video (DIN) 1 x Component (R, G, B, Y, Pb, Pr) (5 x BNC)
Power Supply	AC/DC Adaptor (AC 100-240V~, DC 24V 6.25A)
Control Key	Power, Menu, PIP, ↑, ↓, +, -, Input
Unit Dimension	30.31"(W) x 18.56"(H) x 3.17"(D)
Weight	29.06 lbs.
IP Rating	IPX1
Certifications	ANSI/AAMI ES60601-1(UL60601-1), CAN/CSA C22.2 No. 60601-1, FCC Class B, EN60601-1, EN60601-1-2, CE, MDD(93/42/EEC) Class I Medical Device

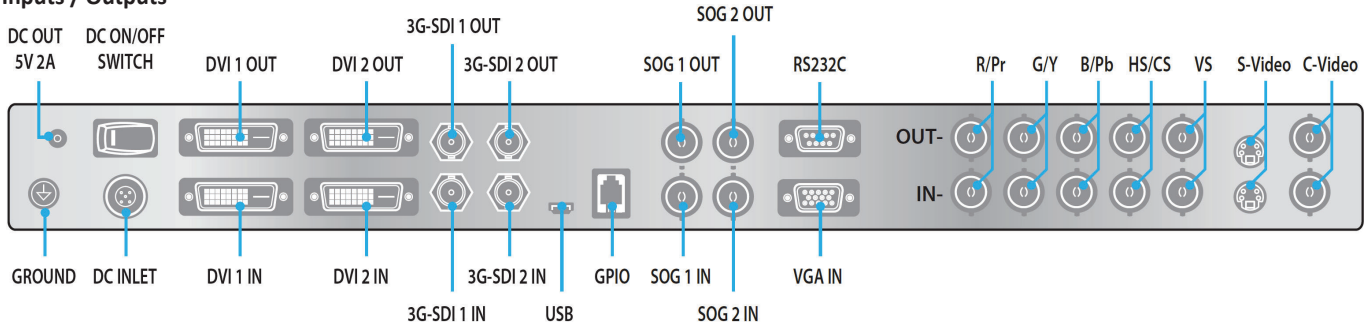
The AlphaView AVC2F8P LED backlit LCD is designed for surgical environments where high resolution, viewability, and flexibility are a must. The AVC2F8P, our 32" medical display, is uniquely equipped to handle tasks in today's demanding OR environment. The fanless design also eliminates the spread of contaminants, making the monitor perfectly suited for the sterile environment of an operating room.

The AVC2F8P offers superior color reproduction, and displays clear imagery of the critical anatomy being captured by the camera. It provides surgeons with the crisp images needed for multi-specialty procedures, while being compatible with all popular endoscopy systems and boom mounting systems. It also features an edge-to-edge protective glass faceplate for easy cleaning and maintenance.

### Dimensions



### Inputs / Outputs



[www.questinc.com](http://www.questinc.com)

Corporate Headquarters

Quest International, Inc.

60-65 Parker, Irvine, CA 92618

+1.800.231.6777 Toll Free

[info@questinc.com](mailto:info@questinc.com)

