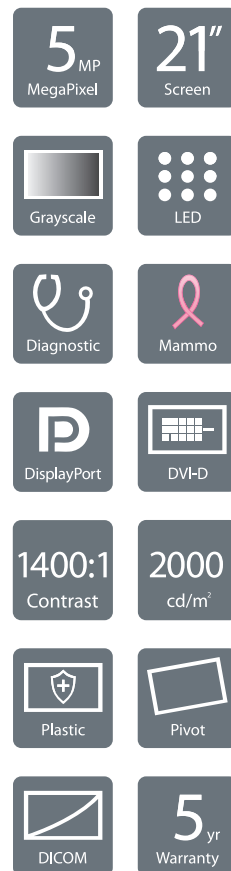
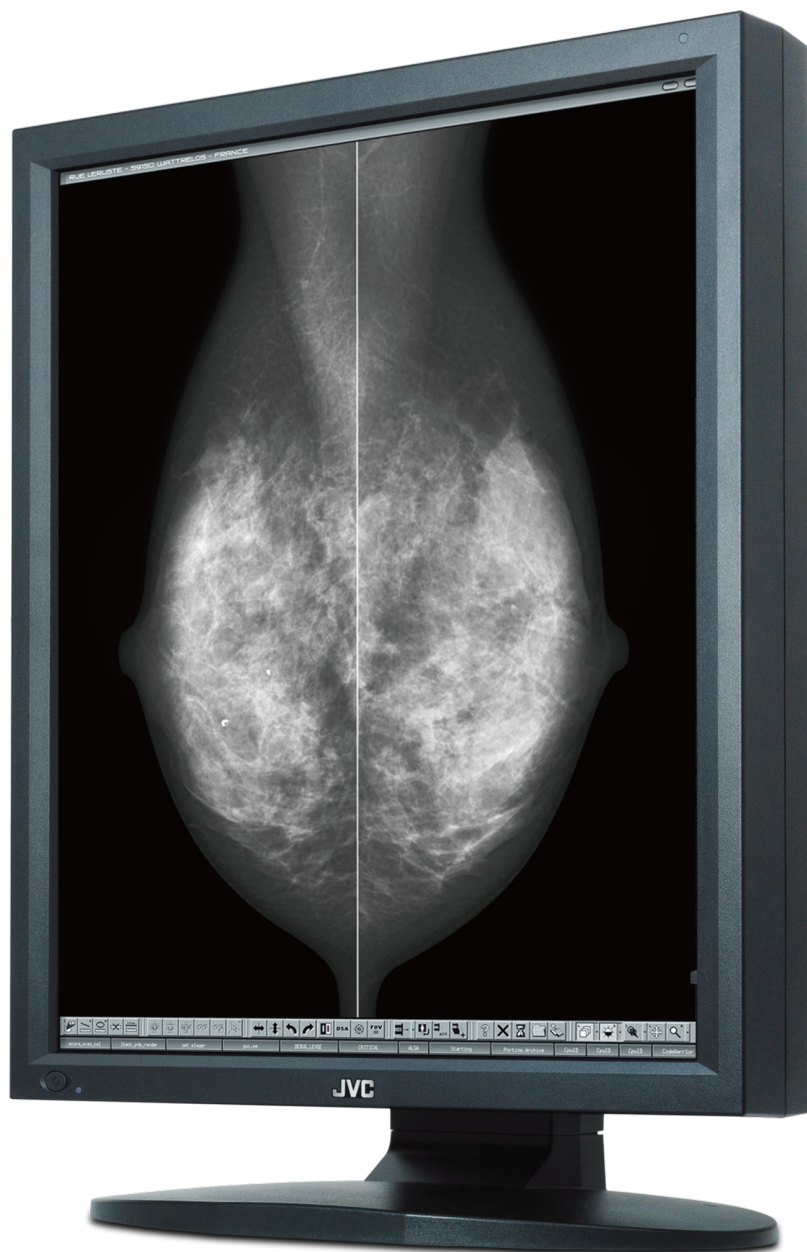


JVC



MS55i2 plus
21.3", 5MP LCD MONITOR
for Mammography and Diagnostic Applications

Medical Mammography LCD

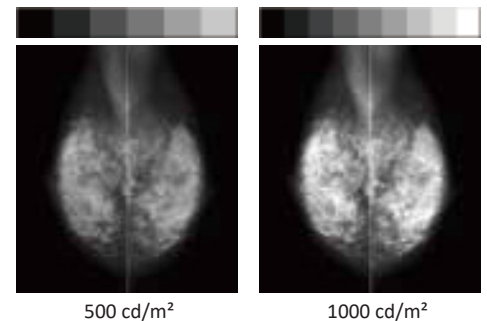
MS55i2 plus

LCD	21.3" Monochrome, TFT active matrix IPS, LED backlit
MegaPixels	5 MegaPixels
Native Resolution	2048 X 2560 (portrait) ISD: 2048 X 7680 (sub-pixel)
Display Area	21.3" diagonal, 422.4mm x 337.9mm
Pixel Pitch	0.165mm x 0.165mm
Maximum Luminance	2000 cd/m ² (typ) 1000 cd/m ² • 500 cd/m ² (calibrated)
Viewing Angle	176° vertical and horizontal
Contrast Ratio	1400:1
Display Colors	256 shades of grayscale are simultaneously displayed from a palette of 12,277 grayscale steps *1024 or 10-bit shades of grayscale with DisplayPort and 10-bit viewer *1276 shades of grayscale by using Independent Sub pixel Drive technology
Calibration	Luminance, Gamma, Capability of saving 3 sets of LUT settings. (An optional calibration kit is required.)
Video Interface	DVI-D (DVI 1.0 compliant), DisplayPort (1.1a compliant)
USB-hub	USB Rev.2.0 compliant, Self-powered USB upstream connector (x1) USB downstream connector (x2)
Other features	Uniformity Equalizer, Hardware pivot, LED indicator, Advanced power management, λ-Sentinel, Multiple LUT, Independent Sub-pixel Drive technology, Self DICOM check, Auto text mode
Regulatory Approval	ANSI/AAMI ES60601-1 (2005) + A1 (2012), CAN/CSA-C22.2 No. 60601-1 (2014), CE (EN60601-1, EN60601-1-2, RCM, FCC Part15 subpart B Class B, ICES-003-B, VCCI-B, CCC, FDA510(k), J-Moss, RoHS
Dimensions	Landscape: 474.5 (W) X 486.1 / 547.6 (H) X 220 (D)mm Portrait: 390 (W) X 525.2 / 586.7 (H) X 220 (D)mm
Input Power	100V ~ 240VAC, 50/60Hz
Power Consumption	75W typical
Mount	VESA standard (100x100)
Display Base	Tilt, Swivel, Height, Pivot adjustments
Included Accessories	Power cord, DVI cable, DisplayPort cable, USB cable, User manual

JVC

The JVC MS55i2 plus has been designed with the latest generation IPS LCD with an LED backlight, featuring a 5MP, 21.3" grayscale panel. The 5MP MS55i2 plus now delivers a contrast ratio of 1400:1 and a maximum luminance of 2000 cd/m² — providing the brightest and clearest images ever. The brighter screen dramatically increases the number of perceptual grayscale steps to improve visibility of microcalcifications, tumors and structures.

Improved luminance & contrast



A new DICOM conformance self-test function is another feature of this newly upgraded digital mammography display. The JVS MS55i2 plus also incorporates an integrated front luminance sensor and an internal temperature sensor which collects, analyzes and stabilizes luminance, eliminating backlight fluctuation. Additionally, the backlight rise time achieves DICOM calibrated luminance levels in under a minute.

www.questinc.com

Corporate Headquarters

Quest International, Inc.
60-65 Parker, Irvine, CA
92618

+1.800.231.6777 Toll Free

info@questinc.com

© Copyright 2018 Quest International, Inc. *This information is subject to change at any time.

Distributed by



MAR-752(3-18)