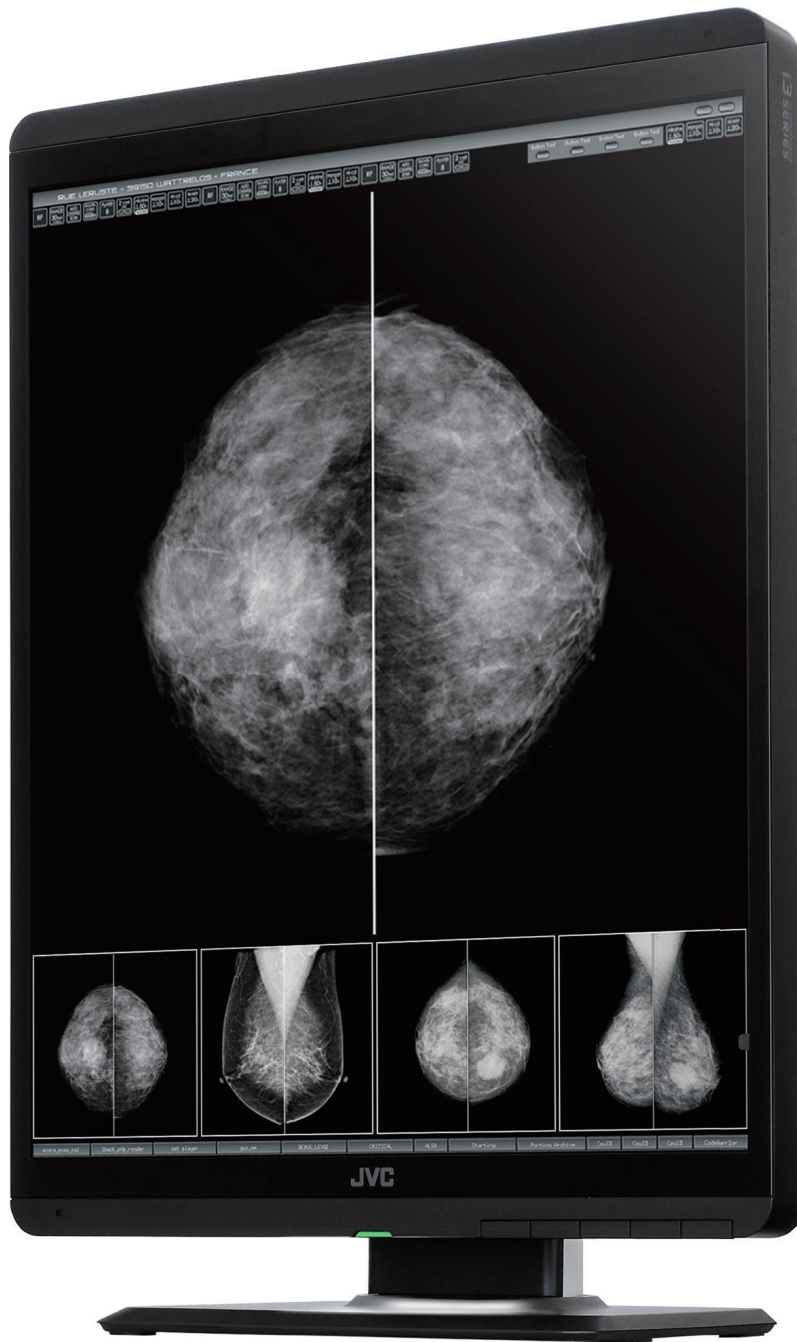


# JVC



- 5 MegaPixel
- 21.3" Screen
- 3000 cd/m<sup>2</sup>
- 2000:1 Contrast
- Grayscale
- LED
- Diagnostic
- Mammo
- Glass
- Reading Light
- DisplayPort
- DVI-D
- DICOM
- 5 yr Warranty

**MS-S500**  
21.3", 5MP Grayscale Display  
for Mammography and Tomosynthesis

# Medical Mammography LCD

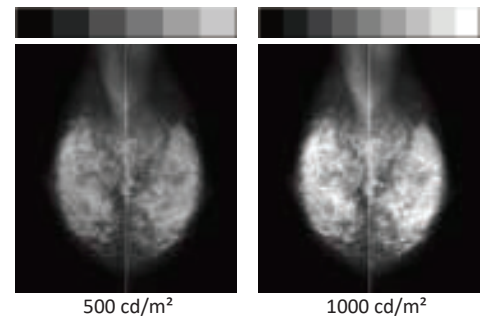


## MS-S500

<b>LCD</b>	21.3" Monochrome, TFT IPS, LED backlight
<b>Native Resolution</b>	2048 x 2560 (portrait)
<b>Display Area</b>	422.4mm x 337.9mm
<b>Pixel Pitch</b>	0.165mm x 0.165mm
<b>Maximum Luminance</b>	3000 cd/m <sup>2</sup> (typ) 500 cd/m <sup>2</sup> / 1000 cd/m <sup>2</sup> (calibrated)
<b>Contrast Ratio</b>	2000:1
<b>Viewing Angle</b>	178° vertical and horizontal
<b>Display Colors</b>	256 shades of grayscale are simultaneously displayed from a palette of 16,369 grayscale steps *1024 or 10-bit shades of grayscale with DisplayPort and 10-bit viewer
<b>Calibration Control</b>	Luminance, Gamma, Color temperature. Capable of saving 3 sets of LUT settings. (An optional calibration kit is required)
<b>Video Interface</b>	DVI-D (DVI 1.0 compliant), DisplayPort (1.1a compliant)
<b>USB-hub</b>	USB Rev.2.0 compliant, Self-powered USB upstream connector (x1) USB downstream connector (x2)
<b>Other features</b>	Uniformity Equalizer, Hardware pivot, LED indicator, Advanced power management, Human Presence Sensor, Independent Sub-pixel Drive technology, Auto text mode, Reading Light, Luminance stabilization, Multiple LUT, Self DICOM check, Self-calibration
<b>Regulatory Approval</b>	ANSI/AAMI ES60601-1 (2005) + A1 (2012), CAN/CSA-C22.2 No. 60601-1 (2014), CE (EN60601-1, EN60601-1-2, FCC Part15 subpart B Class B, ICES-003-B, VCCI-B, CCC, RCM, J-Moss, RoHS
<b>FDA</b>	510(k) Cleared to use for diagnostic purposes with digital medical images for Digital mammography PACS, Modalities including FFDM, and Breast tomosynthesis
<b>Dimensions (W x H x D)</b>	<b>Landscape:</b> 493mm x 451.3mm / 546.3mm x 196.5mm <b>Portrait:</b> 361.5mm x 517mm / 612mm x 196.5mm
<b>Weight</b>	21.9 lbs (9.5 kg)
<b>Input Power</b>	100V ~ 240VAC, 50/60Hz
<b>Power Consumption</b>	80W (maximum)
<b>Mount</b>	VESA standard (100mm x 100mm)
<b>Tilt Stand</b>	Tilt, Swivel, Portrait / Landscape
<b>Included Accessories</b>	Power cord, DVI cable, DisplayPort cable, USB cable, Operation manual, Installation manual, Software (QA Medivisor Agent LE)

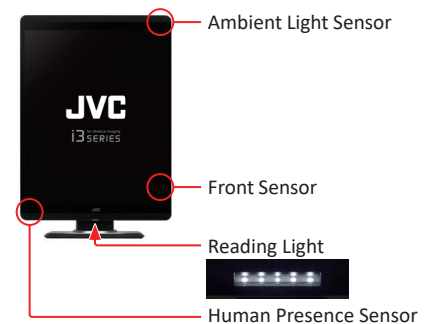
The JVC MS-S500 features the latest generation IPS LCD with an LED backlight, delivers a contrast ratio of 2000:1 and a maximum luminance of 3000 cd/m<sup>2</sup> — providing the brightest and clearest images ever. The brighter screen dramatically increases the number of perceptual grayscale steps to improve visibility of microcalcifications, tumors and structures.

### Improved luminance & contrast



### Advanced Features

- Protective Glass Filter
- Reading Light
- LED Indicator / Front Buttons
- Built-in Sensor
- Space Saving
- Wire Management / Displayport Daisy Chains
- DICOM Conformance Check



[www.questinc.com](http://www.questinc.com)

Corporate Headquarters

Quest International, Inc.  
60-65 Parker, Irvine, CA 92618  
+1.800.231.6777 Toll Free  
info@questinc.com

© Copyright 2020 Quest International, Inc. \*This information is subject to change at any time.

Distributed by



MAR-803 REV.A ( )