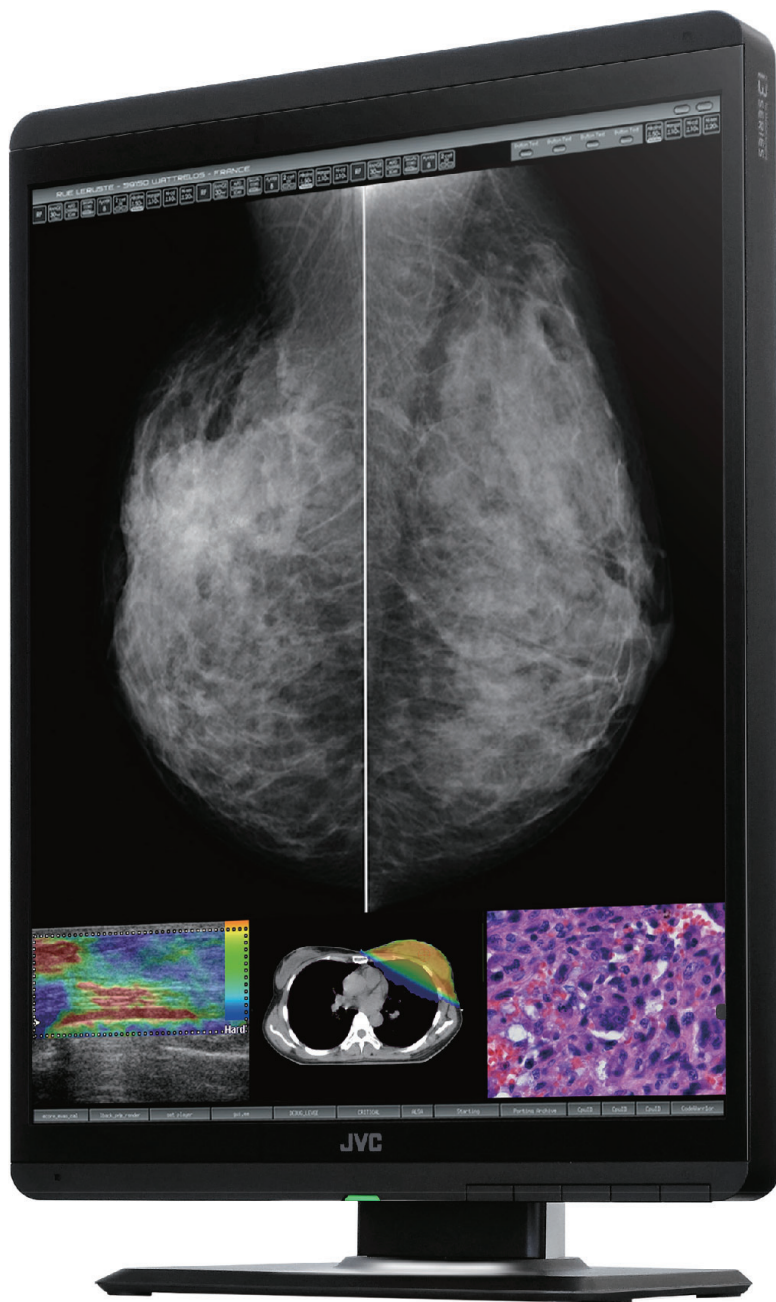
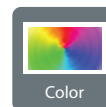


# JVC



21"  
Screen

5  
MegaPixel



Color



LED



Mammo



DICOM



Glass



Reading Light

2000:1  
Contrast

1150  
cd/m<sup>2</sup>



DVI-D



DisplayPort

+  
Certified

5  
yr  
Warranty

## CL-S500

21.3", 5MP Color Display  
for Mammography & Tomosynthesis

# Multi-Modality Medical Monitor



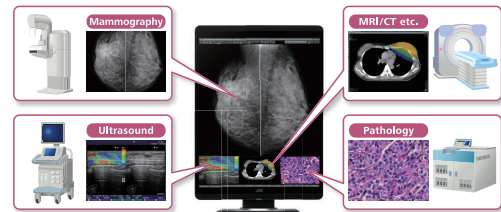
## CL-S500

<b>LCD Panel</b>	Technology	21.3" color TFT IPS technology
	Display Area	337.9mm x 422.4mm
	Pixel Pitch	0.165mm x 0.165mm
	Contrast Ratio	2000:1 (typ)
	Maximum Luminance	1150 cd/m <sup>2</sup> (typ) 500 cd/m <sup>2</sup> (Calibrated)
	Viewing Angle	178° horizontal and vertical
<b>Native Resolution</b>		2048 x 2560
<b>Interface</b>	Input Signal	DVI-D (DVI 1.0 compliant) DisplayPort (DisplayPort 1.2a compliant)
	Output Signal	DisplayPort (DisplayPort 1.2a compliant)
	Plug and Play	DDC2B compliant
<b>Input Power Supply</b>	Input	100V - 240V, 50/60Hz
	Power Consumption	80W (maximum)
<b>Features</b>	Calibration Control	Luminance, Gamma, Color temperature Capable of storing 3 sets of LUT (Optional Calibration Kit is required)
	OSD	Model name, Serial No., Total operating time, Calibration settings (Operating time since last calibration, Luminance, Gamma) Current luminance, Color temperature and Ambient light, DICOM conformance
<b>Approvals</b>		ANSI/AAMI ES60601-1 (2005) + A1 (2012), CAN/ CSA-C22.2 No. 60601-1 (2014), CE (EN60601-1, EN60601-1-2), RCM, FCC Part15 subpart B Class B, ICES-003-B, VCCI-B, FDA510(k), J-Moss, RoHS
<b>FDA</b>		510(k) Cleared to use for diagnostic purposes with digital medical images for Digital mammography PACS, Modalities including FFDM, and breast tomosynthesis
<b>Physical Characteristics</b>	Dimensions (W x H x D)	Landscape: 493mm x 451.3 / 546.3mm x 196.5mm Portrait: 361.5mm x 517 / 612mm x 196.5mm
	Weight	approx. 9.5 kg
	Tilt Stand	Tilt, Swivel, Portrait / Landscape
	Mount	VESA standard (100 mm x 100 mm)
<b>Accessories</b>		Power cord, DVI cable, DisplayPort cable, USB cable, Operation manual, Installation manual, Software (QA Medivisor Agent LE)

The JVC CL-S500 is a 5MP, 21.3", color monitor for a wide range of diagnostic applications. This new i3 color series display renders more precise color and monochrome modality images. JVC's built-in self-calibrating sensor ensures that the monitor constantly performs at its best.

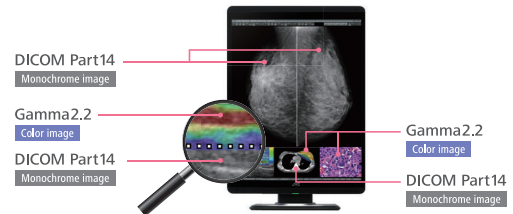
### Multi Modality 5MP Images

The CL-S500 is 510(k) cleared to use for diagnostic digital imaging for all modalities including Digital Mammography, PACS, FFDM, and Breast Tomosynthesis.



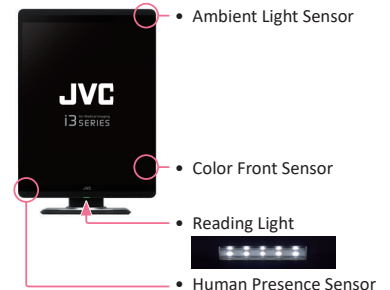
### Dynamic Gamma

Color images are automatically recognized to provide optimal contrast, brightness and gamma—with no user intervention required.



### Advanced Features

- Protective Glass Filter
- Reading Light
- LED Indicator / Front Buttons
- Built-in Sensor
- Space Saving
- Wire Management / DisplayPort Daisy Chains
- DICOM Conformance Check



www.questinc.com

### Corporate Headquarters

Quest International, Inc.  
60 Parker, Irvine, CA 92618  
+1.800.231.6777 Toll Free  
info@questinc.com

Distributed by



**QUEST**<sup>™</sup>  
INTERNATIONAL