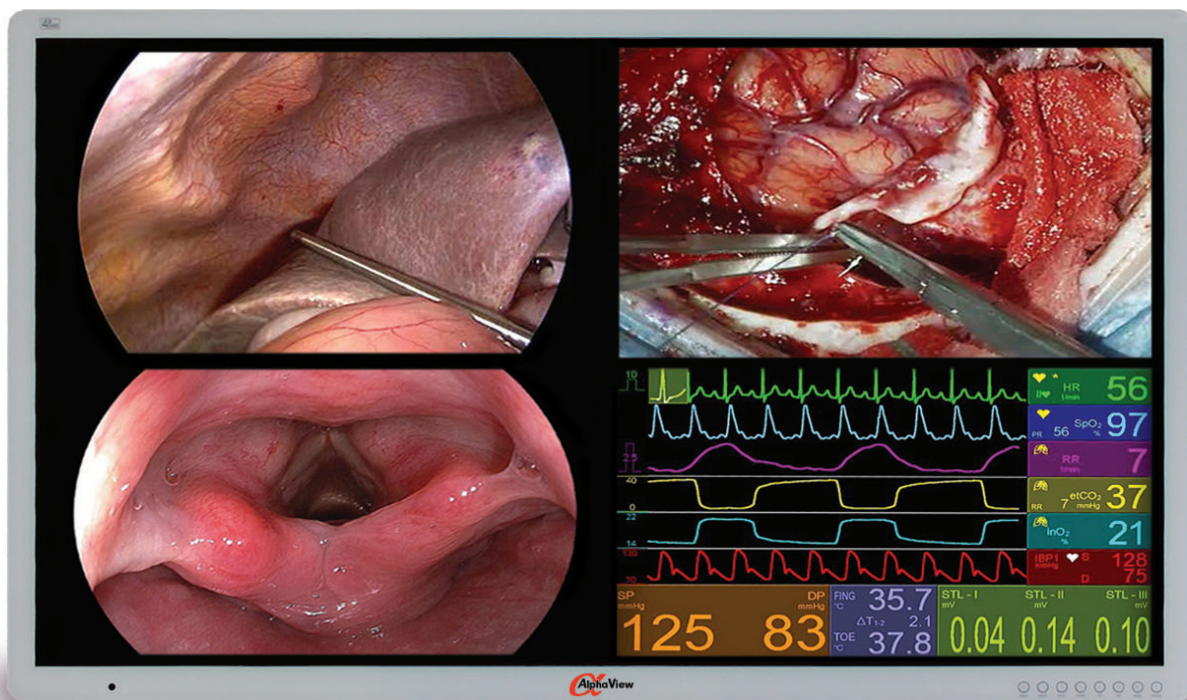




a new way to view...



AVC2F6P-2

55", 4K UHD LCD MONITOR

for Surgical & Endoscopic Applications

Medical Surgical LCD Monitor



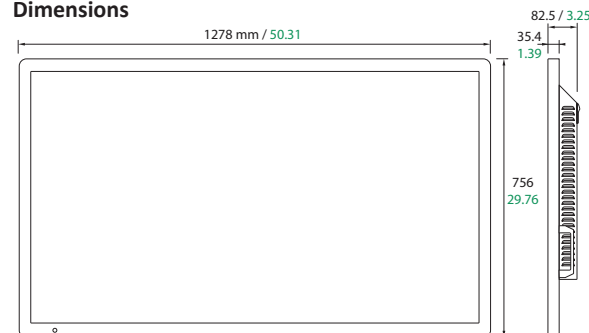
AVC2F6P-2

Type	55 inch TFT LCD (LED)
Resolution	3840 x 2160
Aspect Ratio	16:9
Active Area	1209.6 (H)mm x 680.4 (V)mm
Contrast Ratio	4000:1
Average Brightness	500 cd/m ²
Pixel Pitch (mm)	0.315 x 0.315
Response Time (typical)	8 ms (gray to gray)
Number of Colors	16.7 Million
Viewing Angle (CR>10)	89°/89°/89°/89° or 178° H&V
Input Signal	1 x HDMI 2.0 2 x DisplayPort 1.2 (SST) 1 x DVI (Single link) 2 x DVI (Dual link) available on ver. A 4 x SDI (3G) 2 x SDI (12G) available on ver. B
Output Signal	1 x DVI (single link) 1 x DisplayPort 1.2 (SST) 4 x SDI (3G) 2 x SDI (12G) available on ver. B
Power Supply	SMPS (AC 90 ~270V)
Control Key	Power, Menu, PIP, ↑, ↓, +, -, Input
Unit Dimension	50.31"(W) x 29.76"(H) x 3.25"(D)
Weight	82.34 lbs.
IP Rating	IP20 (overall), IP42 (Front side only)
Certifications	ANSI/AAMI ES60601-1(UL60601-1), CAN/CSA C22.2 No. 60601-1, FCC Class B, EN60601-1, EN60601-1-2, CE, MDD(93/42/EEC) Class I Medical Device

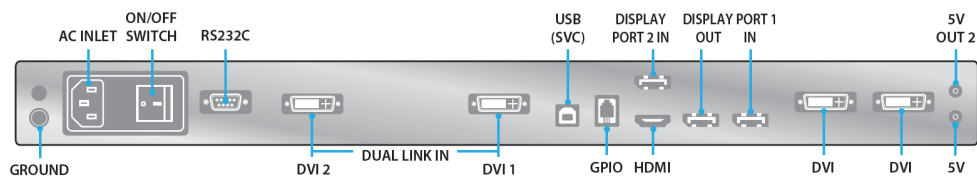
The AlphaView AVC2F6P-2 LCD is designed for surgical environments where high resolution, viewability, image size and flexibility are a must. The AVC2F6P-2, our 55" medical display, is uniquely equipped to handle tasks in today's demanding OR environment.

The AVC2F6P-2 is the ultimate in large screen medical grade displays. This 4K Ultra High Definition display is suitable for showing multiple 1080P images at sizes big enough to remain visible across the operating room. Multi signal inputs allow for windowing options using picture-in-picture and picture-by-picture layouts. The AVC2F6P-2 is the largest display in AlphaView's product line, features LED backlighting, an internal power supply, and handheld remote. It also features an edge-to-edge protective glass faceplate for easy cleaning and maintenance.

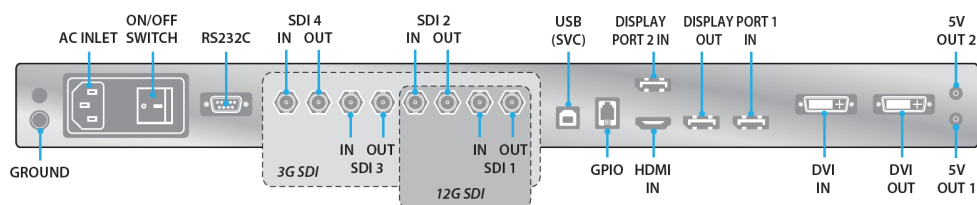
Dimensions



Version A (Dual Link DVI)



Version B (3G SDI and 12G SDI)



www.questinc.com

Corporate Headquarters

Quest International, Inc.

60-65 Parker, Irvine, CA 92618

+1.800.231.6777 Toll Free

info@questinc.com

